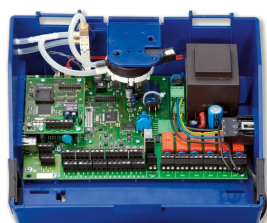
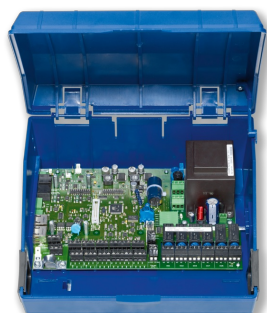


EXPANSION MODULE EM-TRF



EASYPYLAB CONTROLLER  
TCU3



EASYPYLAB ADAPTER  
MODULE TAM

## TYP EM-TRF

### FOR THE CONNECTION OF EASYPYLAB TO THE 230 V MAINS

Expansion module for the direct connection of EASYPYLAB controllers  
Type TCU3 and adapter modules Type TAM to the 230 V mains

- Double-stack terminal blocks for 230 V supply voltage connection
- Electric plug connection to the main PCB
- The expansion module is fitted into the casing with the EASYPYLAB base component

## Application



### Application

- Expansion module Type EM-TRF for the EASYPYLAB system
- For the connection of EASYPYLAB base components (controller TCU3 or adapter module TAM) to the 230 V AC supply voltage (mains)
- Power supply for the base component and the connected modules

- Factory mounted or for retrofitting into the EASYLAB base component casing

### Special characteristics

- Ready for installation, can be easily connected to the main PCB
- Double-stack terminal blocks for 230 V AC supply voltage connection
- Simple electrical connection of expansion module and EASYLAB main PCB using a connection plug
- Simple wiring of switch-operated fume cupboard lighting in combination with the EM-LIGHT expansion module

## Description



### Parts and characteristics

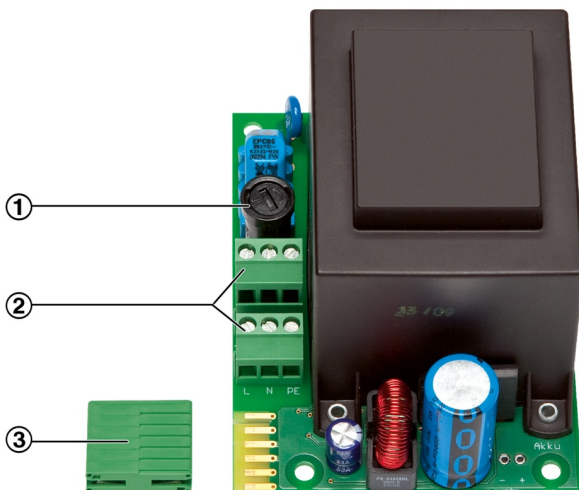
- Mains transformer 230 V AC (primary), 24 V AC (secondary)
- PCB plug connector to connect the module to the EASYLAB main PCB

### Construction features

- PCB dimensions and fixing points correspond to the EASYLAB main PCB and the casing
- Fixing with screws
- Double-stack terminal blocks for simply 230 V supply voltage connection

## INFORMACJE TECHNICZNE

### EM-TRF



- ① Primary fuse
- ② Connection terminals for supply voltage
- ③ PCB connector plugs for connection to the TCU3 controller board

<b>Supply voltage</b>	230 V AC $\pm$ 10 %, 50/60 Hz
<b>Power consumption</b>	up to 40 VA for a controller with all expansion modules; up to 35 VA for a fume cupboard controller with control panel; up to 33 VA for a room controller with control panel; up to 29 VA for a room controller without control panel; up to 9 VA for an EASYLAB adapter module TAM
<b>Primary fuse</b>	50 mA slow blow, 250 V
<b>Double-stack terminal blocks</b>	Cable cross-section up to 2.5 mm <sup>2</sup>
<b>Operating temperature</b>	0 - 50 °C
<b>IEC protection class</b>	I (protective earth)
<b>Protection level</b>	IP 20
<b>EC conformity</b>	EMC to 2004/108/EU, low voltage to 2006/95/EU
<b>Weight</b>	1.3 kg

Expansion module for the EASYLAB base component (controller TCU3 or adapter module TAM) that can be directly connected to a 230 V AC supply voltage. The expansion module includes a transformer whose secondary voltage (24 V) is equal to the supply voltage for the controller and the expansion modules connected to it.

#### Special characteristics

- Ready for installation, can be easily connected to the main PCB
- Double-stack terminal blocks for 230 V AC supply voltage connection
- Simple electrical connection of expansion module and EASYLAB main PCB using a connection plug
- Simple wiring of switch-operated fume cupboard lighting in combination with the EM-LIGHT expansion module

#### Technical data

- Supply voltage: 230 V AC  $\pm$  10 %, 50/60 Hz
- Power consumption: up to 40 VA for a controller with all expansion modules; up to 35 VA for a fume cupboard controller with control panel; up to 33 VA for a room controller with control panel; up to 29 VA for a room controller without control panel; up to 9 VA for an EASYLAB adapter module TAM
- Double-stack terminal blocks: Cable cross-section up to 2.5 mm<sup>2</sup>
- Protection level: IP 20

#### Order code detail for control component ELAB (TCU3) or TAM

ELAB / ... / T... / ...

#### Expansion module EM-TRF for retrofit

EM-TRF